



THE
CHESTER HOUSE
ESTATE



Teacher Welcome Pack

*Engage with the past, and discover the
history beneath your feet*



North
Northamptonshire
Council



Welcome to The Chester House Estate

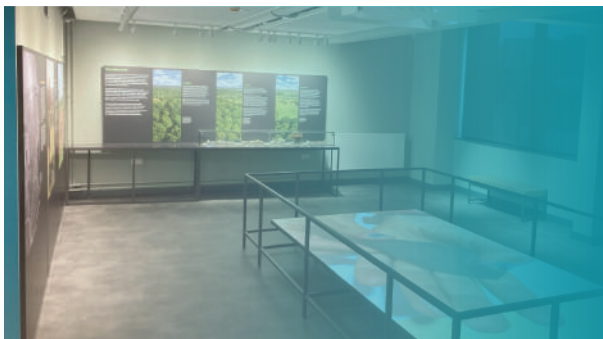
About us

The Chester House Estate is a nationally significant heritage site, being one of the few places in the country which can demonstrate over 10,000 years of human activity.

Literally every step you take here is packed with history, much of it still buried. At Chester House Estate we are committed to caring for and preserving our historical landscape.

We are the proud home of Northamptonshire's Archaeological Resource Centre (ARC), a state-of-the-art facility that acts as the publicly accessible archaeological archive store for the county. Our collections currently consist of over 20,000 boxes of archaeological material from around 3,000 sites across Northamptonshire with space for over 10,000 boxes from future excavations. A slice of this history is presented in our museum too!

Our Exhibitions



The First 8,000 Years

What is archaeology and why is it important?
What kinds of evidence do archaeologists study and what techniques do they use?

You can find the answers to these questions and learn about the evidence for the earliest human activity at The Chester House Estate. (c. 8,000 BC-100 BC)

Late Iron Age - Roman Era

Why did a small town develop here in the Roman period? How did life change under Roman rule?

Find out about archaeological investigation in the walled town and its suburbs, and explore the everyday lives of the townsfolk and their connections with the wider Roman world. (c. 100 BC- c. 500 AD)



Enquire now

OR EMAIL: LEARNING@CHESTERHOUSEESTATE.ORG

OUR LEARNING OFFER

- 4 -5 Types of Visit
- 6-7 Facilitated learning sessions
- 8 Outreach workshops
- 9 Seasonal learning sessions
- 11-12 A typical visit
- 13 The booking process
- 14 Cost

ON THE DAY

- 15 Getting Here
- 16 Landscape Maps
- 17 Museum Maps
- 18 Facilities
- 19 Top tips for Teachers
- 20 Teacher Tick list
- 21 Code of Conduct for learners
- 22-24 Writing your risk assessment



Learning Opportunities

Learning At Our Estate

Learning visits to our estate are available during term time, providing opportunities for learners to engage with the history, heritage and geography of The Chester House Estate.

An onsite learning visit includes:

- An **interactive enquiry-based, workshop** session of your choice, in which learners will investigate original and replica objects to develop an understanding of the lives of the people who used to live in the Nene Valley, why they settled here and how the landscape shaped the way they lived.
- A **guided tour** around our wider site, providing the opportunity for learners to delve deeper into the history of The Chester House Estate and gain an understanding of how the site was used as a settlement throughout history.
- **Self-guided time** which allows groups to explore our exhibitions and shop at their own pace.
- A 30-minute slot in our lunchroom.

Outreach - Learn In Your Setting

During term time, a member of our team can visit your setting with a selection of original historical objects. We can offer:

- A morning or afternoon visit comprising of **2 x 1 hr workshops** with up to **33 children**.
- Workshops can cover different topics - submit an enquiry for more information on topics we offer, or visit our website to see our topics
- An **assembly** for the whole school an individual class/year group for free (plus travel costs) when booked with an onsite or outreach visit.



Enquire now

OR EMAIL: LEARNING@CHESTERHOUSEESTATE.ORG



Loans boxes



What is a loans box?

A box of primarily original objects (typically 15 objects)

- Borrowed for a minimum period of 1/2 a term
- Objects have been chosen which are suitable for regular handling - not for display
- Objects can be used across multiple classes
- Cover a variety of topics:
 - Romans
 - Archaeology
 - Pre-History



The benefits of the loans boxes

- Curriculum Alignment: Supports lesson plans and objectives
- Object-Based Learning: Real artefacts deepen understanding
- Flexibility: Adaptable to your teaching style and lessons
- Cost-Effective: Access to authentic materials without high costs.
- Engagement: Promotes critical thinking and participation.

Making the most of your loans box

- Loans boxes come with a resource pack
 - Guidance on object handling
 - activities that can be incorporated into teaching
 - Learning objectives provided to incorporate activities into wider planning
 - Background information about the topic
 - Notes on each object
- Free CPD sessions are available

- Experiential Learning: Connects theory to real-world application.
- Independence: Encourages self-driven exploration.
- Lifelong Learning: Inspires curiosity and love of learning.
- Supporting Resources: Accompanying guides and lesson plans



Enquire now

OR EMAIL: LEARNING@CHESTERHOUSEESTATE.ORG



ONSITE SESSIONS



Explore outdoors series

Choose from a menu of themed and seasonal activities to engage your children with the great outdoors. Designed to be taught in all weathers, these sessions foster a love of learning and encourage curiosity of the world.

SUITABLE FOR

KS1

PRIMARY
SUBJECT LINKS



GEOGRAPHY SCIENCE

SUITABLE FOR

KS1

PRIMARY
SUBJECT LINKS



HISTORY MATHS



Museum Maths

During this session, learners will explore the evidence that archaeologists use when learning about the past. They will identify, compare and contrast different pottery sherds and original artefacts to identify their uses.



Pre history in the Nene Valley

During this session learners will explore what life was like in the Nene Valley during the Stone, Bronze and Iron Ages. They will examine original objects and try to identify their purpose, have a go at making a soap hand axe and learn how to communicate without written language.

SUITABLE FOR

KS1

KS2

PRIMARY
SUBJECT LINKS



HISTORY



Enquire now

OR EMAIL: LEARNING@CHESTERHOUSEESTATE.ORG



ONSITE SESSIONS



Nene Valley Romans

During this session, learners will explore what life was like for Romans in the Nene Valley. They will handle original objects and try to identify their purpose, read and write Roman curses using Roman ink, and create a Roman clay oil lamp to take home.

SUITABLE FOR

KS2

PRIMARY
SUBJECT LINKS



HISTORY

SUITABLE FOR

KS2

PRIMARY
SUBJECT LINKS



HISTORY



Nene Valley Saxons

Learners will explore what life was like for Saxons in the Nene Valley. They will handle original objects, trying to identify their purpose in addition to creating a replica and gaining an understanding of runes.



How do we know about the past?

Learners will explore what life was like for Saxons in the Nene Valley. They will handle original objects, trying to identify their purpose in addition to creating a replica and gaining an understanding of runes.

SUITABLE FOR

KS2

KS3

PRIMARY
SUBJECT LINKS



HISTORY



Enquire now

OR EMAIL: LEARNING@CHESTERHOUSEESTATE.ORG

ONSITE SESSIONS

How do we know about the past?

This workshop focuses on how archaeologists use different sources to learn about the past. They will learn to critically interrogate objects and sources and practise the practical tasks that archaeologists complete during excavations.

SUITABLE FOR

KS4 KS5

PRIMARY
SUBJECT LINKS



HISTORY



CAREERS

SUITABLE FOR

HE/FE CPD



How to plan your first school trip

Comprehensive training, perfect for early career teachers. This training session takes you right the way through the planning process, from coming up with initial ideas to on-the-day practicalities.

How to incorporate original sources into your teaching

A training session we developed at the request of our teachers. This training session looks at how we can question sources to encourage enquiry skills and decide if what this source tells us can be trusted.

SUITABLE FOR

HE/FE CPD



Enquire now

OR EMAIL: LEARNING@CHESTERHOUSEESTATE.ORG



SEASONAL ONSITE SESSIONS



Changes in Farming

An annual offering which where children visit the cade lambs and take part in a story focused farming session. Children will learn about why we bottle feed lambs, the jobs of a farmer and how these have changed over time.

SUITABLE FOR

EYFS KS1

PRIMARY
SUBJECT LINKS



GEOGRAPHY SCIENCE

AVAILABILITY:



SPRING
(SELECTED DATES)

SUITABLE FOR

EYFS KS1

PRIMARY
SUBJECT LINKS



GEOGRAPHY SCIENCE

AVAILABILITY:



SPRING 2 - END
OF AUTUMN 1



Hedgerow habitats

A purely outdoor workshop. Children will define the key features of a habitat and then explore the different areas of Chester House to discover the creatures that live in the different areas of Chester House



Geography Fieldwork

Developed in response to teachers asking for support delivering fieldwork. This whole-day workshop enables children to plan and deliver a successful piece of fieldwork around how bee-friendly the different areas of The Chester House Estate are

SUITABLE FOR

KS2 KS3

PRIMARY
SUBJECT LINKS



GEOGRAPHY SCIENCE

AVAILABILITY:



SPRING 2 - END
OF AUTUMN 1



Enquire now

OR EMAIL: LEARNING@CHESTERHOUSEESTATE.ORG



SEASONAL ONSITE SESSIONS



Irchester Field School - June - 16 July 2024

Developed in partnership with the University of Leicester, we are offering an unparalleled, curriculum-aligned learning experience for children, bringing the past to life through interactive workshops, excavation site visits, and expert-led activities. Aligned with national curriculum standards and Ofsted priorities, our programme fosters creativity, critical thinking, and historical understanding.

We are offering your students:

- A dedicated archaeologist for the day, providing personalized guidance and enriching their learning journey.
- Access to nationally recognized excavation programme, where they can witness archaeological research in action.
- Interactive and hands-on workshop, unlocking the secrets of ancient objects and bringing history to life.
- Development of vital skills like investigation, analysis, and communication, preparing them for future success.
- An unforgettable experience that ignites a passion for the past and leaves a lasting impact.



OUTREACH SESSIONS



Unveiling Ancient Secrets: Prehistory

During this session, learners will explore what life was like in the Nene Valley during the Stone, Bronze and Iron Ages. They will examine original objects and try to identify their purpose.

SUITABLE FOR

KS2

PRIMARY
SUBJECT LINKS



HISTORY


SUITABLE FOR

KS2

PRIMARY
SUBJECT LINKS



HISTORY



Unveiling Ancient Secrets: Romans

During this session learners will explore what life was like in the Nene Valley during the Roman Era. They will examine original objects and try to identify their purpose,

SUITABLE FOR

KS2

PRIMARY
SUBJECT LINKS



HISTORY



Unveiling Ancient Secrets: Learning about the past

During this session learners will explore the evidence that archaeologists use when learning about the past. They will identify, compare and contrast different pottery sherds to identify their uses.



Enquire now

OR EMAIL: LEARNING@CHESTERHOUSEESTATE.ORG



OUTREACH SESSIONS

The artefacts of archaeology

A Key Stage 3 & 4 workshop on material investigation. This workshop addresses how archaeological materials are found, recorded, and dated. It is designed to encourage critical thinking and promote creativity of thought. It includes an exercise in the illustration of archaeological finds.

SUITABLE FOR

KS4

KS5

PRIMARY
SUBJECT LINKS



HISTORY

Assemblies

We offer free assemblies to schools who have booked into our outreach programme.

Our assemblies introduce students to Archaeology and The Chester House Estate.

Our assemblies are adaptable to the students that we are delivering to, whether a class, key stage or whole school assembly. We focus on introducing students to Archaeology and the Chester House Estate. Depending on the topic booked, we can focus our assemblies on a particular era (e.g. Pre history) or provide a more broad overview.



Enquire now

OR EMAIL: LEARNING@CHESTERHOUSEESTATE.ORG



A typical visit...

Example itinerary - 3 form entry

The following is an example of a possible itinerary for a facilitated school visit bringing 3 classes to our site.

	Class 1	Class 2	Class 3
09:45	Group arrive at Lime Avenue Car Park to drop off		
9:45 - 10:00	Toilet stop, bag drop off		
10:00 - 11:15	Landscape Tour	Workshop	Self led time In museum using pre printed* resources and shop visit
11:15 - 12:15	Self led time In museum using pre printed* resources and shop visit	Landscape Tour	Workshop
12:15 - 12:30	Lunch		
12:30 - 12:45		Time to use play area	Lunch
12:45 - 13:00	Time to use play area		
13:00 - 13:15		Lunch	Time to use play area
13:15 - 13:30			
13:30 - 14:15	Workshop	Self led time In museum using pre printed* resources and shop visit	Landscape Tour
14:15 - 14:30	Toilet stop, bag drop collection from learning centre		
14:30	Group to make their way to Lime Avenue car park for departure		

***All facilitated visits will receive an electronic copy of our on gallery resources. We strongly recommend that you print and bring these with you to enhance your gallery visit.**



Enquire now

OR EMAIL: LEARNING@CHESTERHOUSEESTATE.ORG



Making your booking...

1) Decide on the **type of visit** you would like and (if relevant) the session you would like your learners to experience.

2) Decide on **2 or 3 dates** that you would like to visit.

3) Read our **terms and conditions on our website, or click the link below if accessing our digital pack.**

[Terms and conditions - 2024](#)

4) Scan our **QR code at the bottom of the page** to make an enquiry. You will need the the following information:

- dates you would like to visit
- the type of visit and session
- the number of learners you would like to bring
- the ages/level of the learners
- any additional needs that we would need to make reasonable adjustments to support your learners

We aim to respond within 5 working days to enquiries.

5) We will **confirm availability** and **send you a booking form**. Once this form is completed, you are bound by our terms and conditions.



Enquire now

OR EMAIL: LEARNING@CHESTERHOUSEESTATE.ORG



What teachers say...

"A fun, knowledgeable and interactive session which the learners loved. Natasha's delivery was outstanding, and the class left knowing what life used to be like on an old Roman site like Chester House."

Mr Childs - Isebrook School

"Our trip was great - the children were all involved in the practical activities, all abilities were catered for. The whole day was interesting and informative for them - they explored a real Roman Town site and learned about how people used to live. Now they can take this knowledge back to their school classroom where we are kickstarting our Roman topic!"

Ms Richardson - Irchester Primary School

"We enquired originally about an onsite visit to Chester House but quickly saw the benefits of their outreach visits - cost-effective and saves the travel hassles.

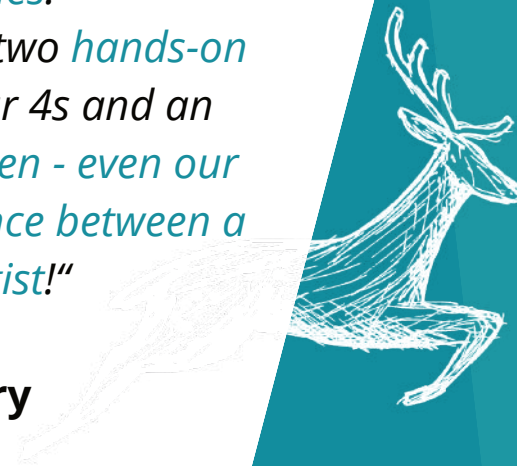
The team came to our setting and delivered two hands-on pre-history outreach workshops to our Year 4s and an assembly for the whole school. All the children - even our reception class - can now tell me the difference between a palaeontologist and an archaeologist!"



Enquire now

Ms Graves - Freemans Primary

OR EMAIL: LEARNING@CHESTERHOUSEESTATE.ORG



Costs

Facilitated onsite visit	An onsite visit to Chester House with a session and tour	£175 per class
Outreach visit	We visit your classroom for a 1 hour session	£125 per class*
Loans Boxes	Borrow a box of objects for 1/2 a term	£60
Teacher CPD	Learn how to use original objects and sources in your teaching	Free**
Virtual visit	An ask the expert virtual session for 1 class	£50

*plus travel costs.

**One free place on a CPD session at Chester House per school engagement with our learning programme.

We love to see return visitors so speak to us about multi-booking packages!



Enquire now

OR EMAIL: LEARNING@CHESTERHOUSEESTATE.ORG



Where to find us

The Chester House Estate is situated just off the eastbound A45 between Wellingborough and Rushden.



Coach drop off

We ask coaches to drop off and pick up at our **Lime Avenue entrance, NN29 7EZ**. Please park up on the **lay by outside the ARC** (grey building on the right as you enter).

Coach Parking

Following drop off, if required, coaches can park at our main visitor car park (Claudius Way, indicated by a ★) which can be accessed **through the Prologis Park** Wellingborough. Please use postcode **NN8 2DH** to find this entrance.

This is a 5 to 10 minute walk to the estate along a hard standing footpath in place, which is wheelchair and pram friendly. Please note, there are **no toilets at the Claudius Way car park**; the nearest toilets are located in our estate courtyard.

When you arrive

Please make your way to our Learning and Community Centre (building 8 on next page) and make yourself known to a member of our staff or volunteers. If you are on a facilitated visit, you will be able to drop off your lunchboxes in this building.



Enquire now

OR EMAIL: LEARNING@CHESTERHOUSEESTATE.ORG



Where to find us

The Chester House Estate is situated just off the eastbound A45 between Wellingborough and Rushton.



Parking

Please use the **Lime Avenue carpark, NN29 7EZ**. (2nd entrance on a45)

When you arrive

Please make your way to the blue telephone box in the courtyard (marked on map). Your session will be taking place in our Learning and Community Centre (building 8).



Enquire now

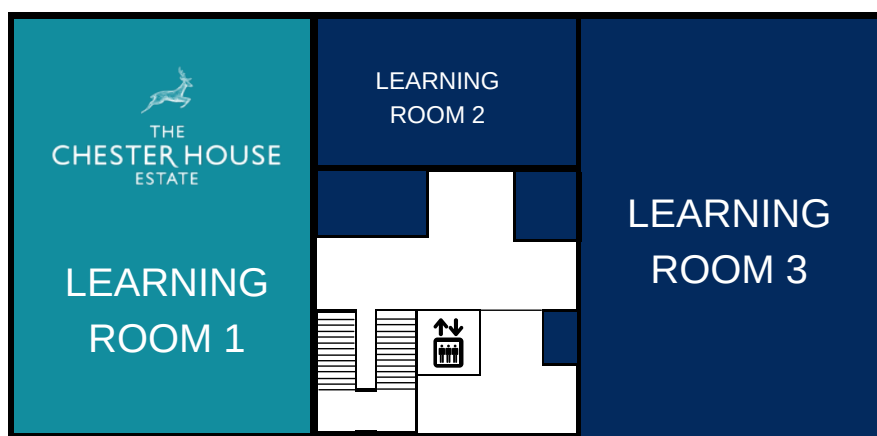
OR EMAIL: LEARNING@CHESTERHOUSEESTATE.ORG



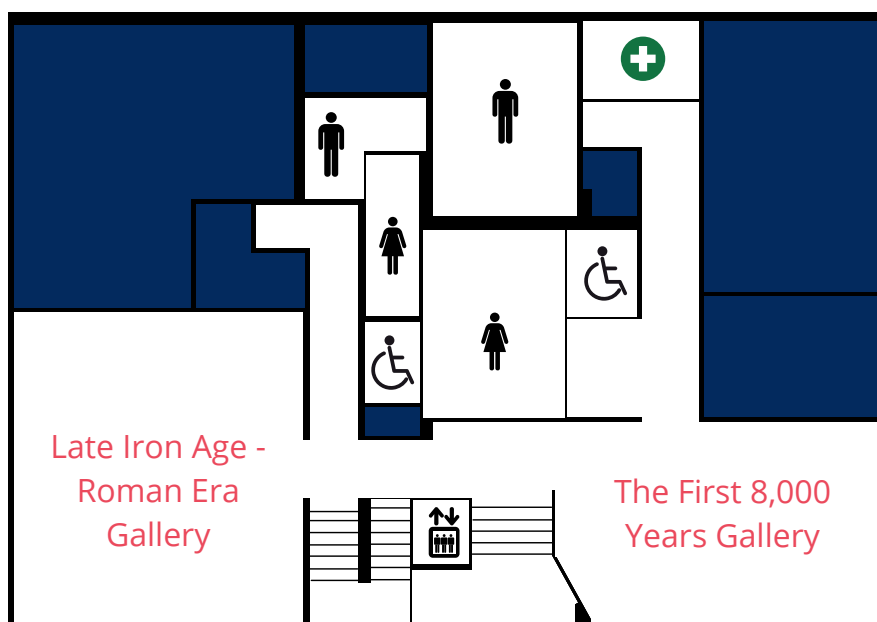
Your facilities

All white/teal areas are accessible to you during your visit. All navy areas are staff/volunteer only.

Whilst there is a first aid room in the Learning Centre and Museum, we ask that all incidents be reported to a member of staff, who will act accordingly.



Floor 1



Floor 0

Building entrance



Enquire now



OR EMAIL: LEARNING@CHESTERHOUSEESTATE.ORG

Your facilities

Courtyard

Picnic table

The outdoor Courtyard can be used to eat lunch on sunny days

Shops

Our courtyard contains many different shops including our gift shop. We haven't allocated time in the itinerary to visit shops so recommend that you visit in your free time.

Learning and Community Centre

Accessible lifts

All floors are accessible via lift.

Floor 0

Exhibitions

We have two exhibition spaces in our learning and community centre. Schools will be allocated time to visit our exhibitions.

Toilets

All toilets in this building are located on this level.

Floor 1

Risk Assessments

Use our risk assessments to plan your visit. Teachers are encouraged to complete their own.

Learning resources

Download resources to support your visit. Use them to embed a visit into your topic and prepare for your visit.



ENQUIRE NOW:
LEARNING@CHESTERHOUSEESTATE.ORG

The Farmhouse

Unfortunately, due to the listed nature of our building, the Farmhouse only has step-free access on the ground floor.

Cafe

Our cafe and ground floor seating areas are accessible via step-free access.

Play area

We have an outdoor play area which is available during 'free time' in your visit

The ARC

Accessible lifts

All public floors are accessible via lift.

Toilets

Accessible toilets are available on all floors.

Artefact stores

Our artefact stores are all accessible via lift and can be accessed via pre booking through our archivist.

Research room

We have a research room that is available if booked in advance with our archivist.



Making the most of your visit

Before your trip

Make a familiarisation visit

We strongly recommend visiting us to plan your trip. To organise a meeting with a member of the team during your visit please email the learning team at learning@chesterhouse.org.uk and include your booking reference.

Check your itinerary

Read your itinerary carefully. Contact us immediately if anything is incorrect.

Risk Assessments

Use our risk assessments to plan your visit. Teachers are encouraged to complete their own.

Learning resources and gallery trails

Download resources and trails to support your visit. Use them to introduce the topic and prepare for your visit

SEND

Please provide us with any SEND requirements with 4 week's notice so that we can organise resources to support your learner's needs.

On the day

Arrive promptly

All schools including self-led visits must arrive at the Learning Centre and Museum at least 15 minutes before the start of your first activity. Bring your confirmation email as proof of booking. A welcome briefing will be provided by the Learning team.

Outdoor clothing

Please ensure that learners bring appropriate outdoor clothing as the historical landscape tour will go ahead regardless of the weather.

Lateness

Call 07770811707 if you are going to arrive late. Adjusting your timetable is at the discretion of the Chester House Estate and may not always be possible.

Brief your class

Divide each class into small groups with an adult supervisor. Give each adult a copy of your timetable. Bring a class register and any medications for your pupils.

Supervision

The Chester House Estate is a public place. Teachers and accompanying adults are responsible for the health and safety of pupils. Read our Code of Conduct.

Eating and drinking

Food and drink are not allowed in any of the exhibition spaces or in facilitated sessions.

Lunch

Schools who have booked a facilitated learning session will be allocated a 30-minute slot in our learning room or can utilise our beautiful grounds or our covered picnic space.

Self-guided groups can pay £20 for a 30-minute lunch slot in our learning room.

Adult: pupil ratios

Must be as agreed in your booking confirmation.

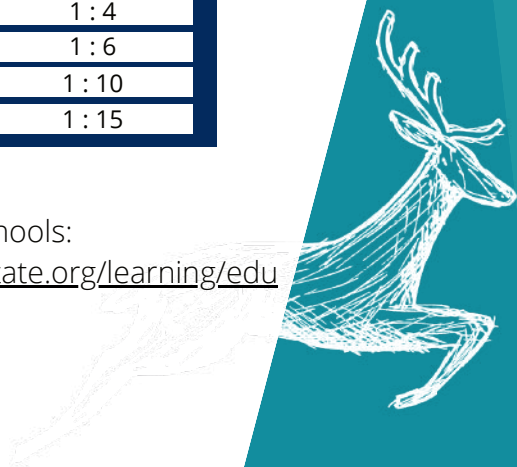
We require all groups to meet the minimum adult: child ratios as outlined by the NSPCC (not including additional SEND support).

Keystage	Ratio
EYFS	1 : 3
KS1	1 : 4
KS2	1 : 6
KS3	1 : 10
KS4+	1 : 15

More information

Read our T&C's for schools:

www.chesterhouseestate.org/learning/educational-school-visits/



Teacher ticklist

A set of handy tick lists to make the most of your visit.

Before your visit

✓	Task	Notes
	Check and print your confirmation email	
	Check and print your itinerary	
	Read your Welcome Pack	
	Plan your journey and arrange travel	
	Arrange payment of invoice	
	Download learning resources	
	Book a familiarisation visit	
	Read and write risk assessments	
	Explain code of conduct to learners	
	Confirm the number of supervising staff/adults	
	Incorporate pre/post visit resources into your lesson plans	
	Let us know of any reasonable adjustments are needed.	

During your visit

✓	Task	Notes
	Divide your class into groups (see adult:child ratios)	
	Print out on gallery resources	
	Print a timetable for each adult	
	Pick up lunches and any medications	
	Allow plenty of time for your journey	
	Remind children of the code of conduct	
	Take lots of photographs	
	Have fun!	

After your visit

✓	Task	Notes
	Give us your feedback on your visit	
	Send us photographs of your visit	
	Re-book for next year	



Enquire now



Student Agreement

We ask all learners to:

- Take responsibility for their own learning
- Cooperate with each other
- Be friendly
- Listen
- Help
- Respect each other's differences
- Treat staff, volunteers and other visitors with respect
- Report any concerns or worries

Learners should not:

- Bully each other
- Pick on or make fun of each other
- Be abusive
- Abuse equipment
- Litter

If the code is breached the child will be reminded of the code of conduct and asked to comply. They will be given an opportunity to reflect on their actions to plan a positive response. All behaviour is the responsibility of adults accompanying visiting groups.

If the behaviour persists and a member of CHE staff is delivering an unsupervised activity, appropriate behaviour management systems need to be followed. Participants work with the facilitator at the start of projects and sessions to set expectations informed by the code of behaviour for children and young people.

If delivering activities in an outreach, community, education setting, CHE staff will follow the behaviour management systems of the organisation (e.g. mainstream school traffic light system).

Chester House Estate staff will not intervene in situations where they are not fully trained; for example, under no circumstances will Chester House Estate staff or contracted staff be left alone with vulnerable groups such as special needs groups or adults at risk and be expected to manage behaviour. A specialist trained adult/carer must be present to safeguard welfare.



Enquire now

OR EMAIL: LEARNING@CHESTERHOUSEESTATE.ORG



Risk assessment

We strongly advise that group leaders conduct a pre-visit and to assist with the creation of their own risk assessment. To make this easier we have outlined some of the key points from our onsite risk assessment. For a full copy please email learning@chesterhouseestate.org.uk

Hazard Identified	Control Measures
Slips, Trips and Falls- Uneven ground around the wider estate	Dangerous potholes or uneven surfaces are reported to the site maintenance team for repair. Are to be barriered off if necessary to prevent injury. Ongoing maintenance of the site and checks. Website advises sensible footwear to be worn during a visit. Adequate lighting around the site to ensure that the walkways are lit.
Walking in and around the Chester House Estate buildings- Trip hazards, including uneven floors, rope barriers, wet floors & exhibits.	Clear walkway areas and access to interactive areas without barriers. Front of house regularly checks of display area. Signage for wet floors. Public to not be in ARC storage areas while archives are being moved. Archives to be stored safely before public allowed entry to the stores (BDS)
Moving vehicles- Some vehicles are required to drive around the estate during opening hours	Where possible, restrict vehicle use during opening hours and authorisation, if necessary, must be granted by the duty manager beforehand. Strict 5mph for driving within the Chester House Estate. Clear direction is given to the drivers of vehicles detailing what is expected of them. Drivers of drive on lawn mowers are trained on use and will not use them when groups are close by.
River- Open water	Throw lines and life jackets on the side of the river for rescue which are regularly checked. Group coordinators to ensure learners are closely monitored in this area. First Aiders on site if required.
Visitor or learning member involved in an accident during visit	Trained first aiders are always on site. Staff and volunteers have radios/phones to summon assistance if required. First Aid room available for privacy and care. Defibrillator on site if required. Audits are completed regularly to ensure adequate stock of first aid supplies.
Lost child/member of the group/Visitor- Become separated from group	All staff and volunteers at the Chester House Estate have been trained in the safeguarding policy. Visitor Experience Staff and Volunteers are located in the major locations throughout the Chester House Estate and are able to communicate with each other via radio and telephone to assist the lost member. Telephone is to be used for communicating specific details to ensure confidentiality and security is kept at all times. Duty manager (designated safeguarding officer) will be informed and a member of The Chester House Estate. will remain with the lost person until reunited with their party.



Hazard Identified	Control Measures
Ongoing grounds work on site- Site maintenance teamwork around the site daily	Maintenance team to hold regular team briefings talks to ensure procedures stay fresh in minds, all staff trained on how to use equipment or tools, no tools or equipment is to be left unattended. Working areas are to be kept tidy and good housekeeping throughout the site.
Disabled Visitors- Lack of access/facilities could cause distress	All areas open to the public are accessible to disabled visitors in line with the Equality Act. Some members of staff are trained in working with children and adults with disabilities and learning needs. Disabled parking spaces available near the ARC.Both the Learning and Communities centre and the Arc have wheelchair access to multiple floors. Wheelchairs are available on request if required. Guide and assistance dogs are welcome. BSL interpreted guided tours available throughout the year. Alarm system within each disabled toilet with pull cord activation to alert staff members that someone needs assistance.
Falls downstairs and trapped fingers in lifts.	Lifts are regularly maintained. All stairs have handrails. Visitors encouraged to walk, not run and keep fingers away from lift doors.
Fire/Emergency Evacuation	All fire exits are clearly signed throughout the park with numerous fire extinguishers available, each area has stewards that patrol the grounds all of which are trained in emergency evacuation procedures and ensuring all people are out of the premises as soon as possible. Trained fire wardens on site who will coordinate with the duty manager ensuring visitors are safe and at assembly areas. Emergency alarms/equipment are regularly checked and maintained. Emergency evacuation drills completed quarterly for staff and volunteers.
On Gallery interactives: Damage to display objects could result in cuts.	Regular checks for any damage to handling objects / interactive displaysFront of house staff regular checks. School supervisory staff to monitor their children
Reachable displays non-interactive - risk of misuse and catching of hands / fingers)	Open displays have please do not touch signs. School supervisory staff to monitor their children. Staff in Galleries to be vigilant to unauthorised handling
Leaflets storage- (loose stored leaflets could fall onto floor and become a trip hazard)	Monitoring and general tidying of area. Leaflets displayed in stands/boxes F.O.H. monitoring
General public – risk from other adults e.g., abduction, abuse	Teachers are to always remain with their groups. Safeguarding Children & Vulnerable Adults Policy in place, including code of conduct. Members of The Chester House Estate team regularly move around the site.



Hazard Identified	Control Measures
Medical Emergency - injury or illness	Qualified First Aiders on site. Teachers advised to bring their own first aider. First Aid boxes in easily accessible places. Radio contact between staff.
general craft materials and equipment e.g., glue, paints, modelling clay and scissors	The use of materials and equipment will be explained to participants before activity commences. Any additional supervision will be determined in advance. The COSHH safety guidelines for any materials used will be checked in advance. Materials will be child friendly and non-toxic. Participants will be encouraged to wash their hands afterwards. Children should always be supervised by their accompanying adults.
Costume wearing - reaction to washing powder used to wash costumes	Only Non-biological detergent is used to wash dress up costumes. Costumes only worn over top of clothing.
Handling objects and activity materials (both on HSIllery and during learning sessions) - cuts, splinters, impact if dropped, trapped fingers, trips	Learners/the public are given clear instructions on handling objects. Handling objects checked for sharp edges before sessions. A member of The Chester House Estate team will always be present during handling sessions. Any loose parts kept in trays and children asked to keep working areas tidy. If the public are washing archives or dealing with recently excavated materials, they will be asked to wash hands and provided facilities to do this before eating/drinking.
General use of Learning rooms 1, 2 and 3 - Trapped fingers in entrance doorway. Tripping on bags and coats or equipment Electric sockets	Store items safely away from the main activity area. Sockets are always covered.
Lunch Space - (Potential trip hazard from seating, bin, refuse)	Ensure that area is left clean and tidy.
Inside the cafeteria, a potential risk of slip hazard if a customer/member of staff, has spilt drink, dropped food etc,	Yellow Wet floor signs to be placed by the wet area until the floor has dried, wet floor sign to be removed once floor dry.
Inside the cafeteria a potential risk hazard of a fall/ trip customers prams, wheelchairs, walking sticks, sticking out on to main serving area	Asking customers to be mindful of the hazards they could cause if not stored correctly. Staff to keep eye on any potential risk.

